



BERMUDA

MARINE BOARD (PROHIBITED AREA)
(WESTGATE CORRECTIONAL FACILITY) NOTICE 2013

BR 99 / 2013

The Minister responsible for marine and ports services in exercise of the power conferred by section 10(1)(aa) of the Marine Board Act 1962 and after consultation with the Minister responsible for corrections, issues the following Notice:

Citation

1 This Notice may be cited as the Marine Board (Prohibited Area) (Westgate Correctional Facility) Notice 2013.

Prohibited area

2 (1) The area of waters immediately surrounding and extending 50 metres from the shoreline of the Westgate Correctional Facility, Ireland Island (delineated on the map set out in the Schedule) is prohibited to marine traffic.

(2) In this notice "marine traffic" means a boat and includes a personal water craft commonly known as "jet ski".

Offence to enter prohibited area

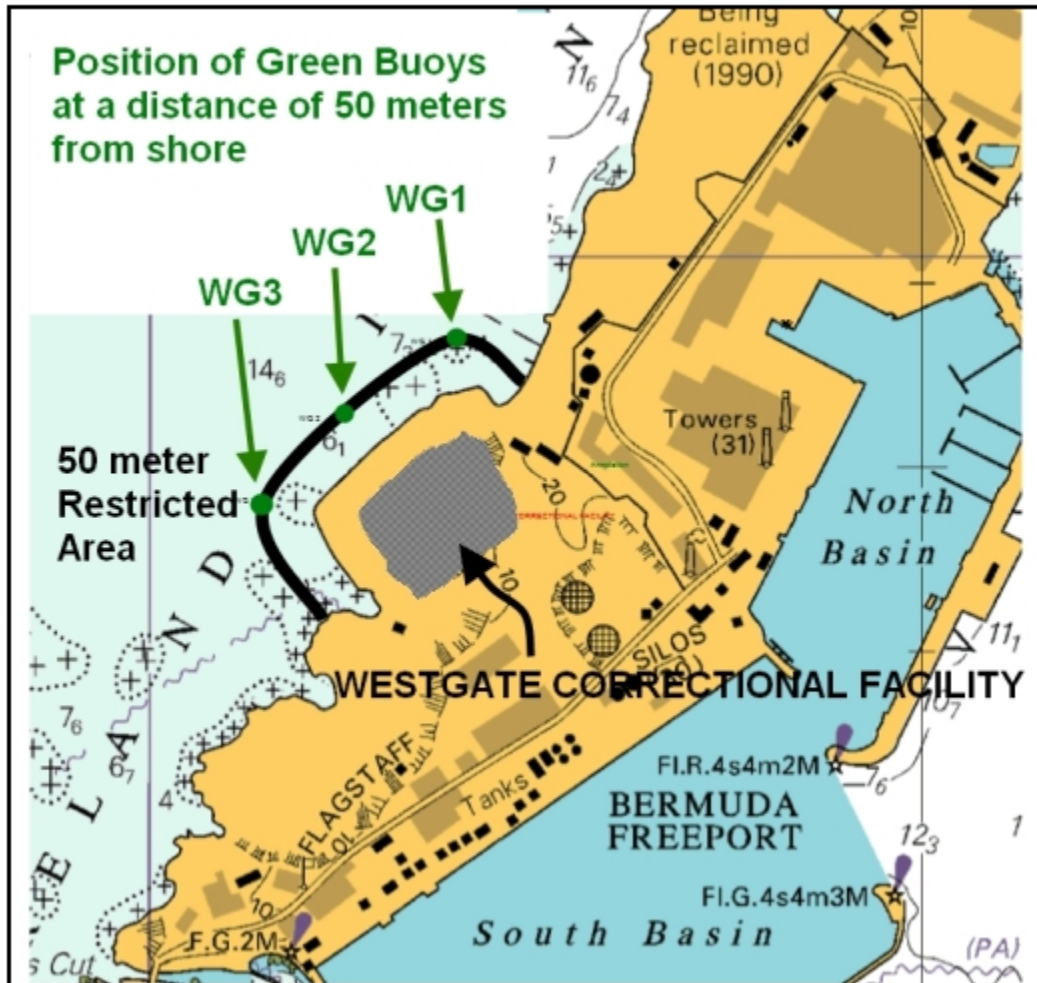
3 A mariner who enters the prohibited area commits an offence under section 10(3) (a) of the Marine Board Act 1962.

MARINE BOARD (PROHIBITED AREA) (WESTGATE CORRECTIONAL FACILITY) NOTICE 2013

SCHEDULE

(paragraph 2(1))

MAP DELINEATING PROHIBITED AREA



MARINE BOARD (PROHIBITED AREA) (WESTGATE CORRECTIONAL
FACILITY) NOTICE 2013

Made this 20th day of November 2013

Minister of Tourism Development and Transport